



Clones Knot

Draw up a $\frac{1}{2}$ " (1.3 cm) chain. Holding the chain in place, yarn over hook (figure 1), *bring the hook toward the front and under the loop to the back, yarn over hook and bring the hook back under the loop toward the front (3 loops on hook, 1 wrap completed; figure 2). Repeat from * twice (7 loops on hook, 3 wraps completed).

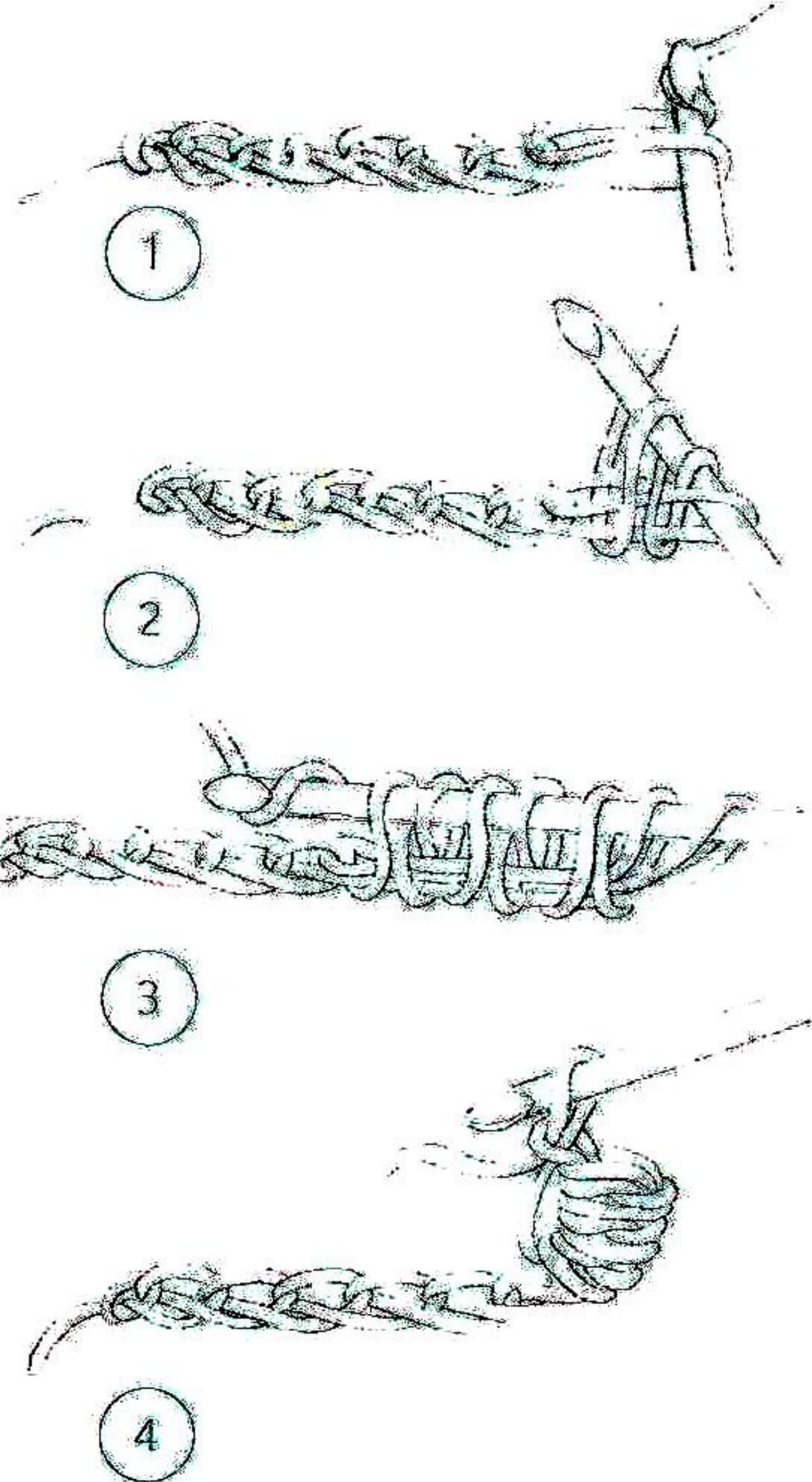
Yarn over hook (figure 3), draw yarn through all loops on hook. Secure knot by working ch 1 tightly (figure 4).

note: The length of the initial chain indicates the size of the Clones Knot. To make a larger Clones Knot, draw up a longer chain and repeat from * in the above instructions to wrap the yarn around the chain until it is completely covered.

Foundation double crochet (fdc) p. 157.

2 double crochet cluster (2-dc cl) p. 157.

3 double crochet cluster (3-dc cl) p. 157.



note

- The floral edging is worked sideways and joined to the circular shawl on every 4th row for a finished shawl with no seams.

YARN

Fingering weight (#1 Super Fine):
1,281 yd [1,171 m].

shown: Alpaca Yarn Company, Glimmer (97% Baby Alpaca/3% Polyester; 183 yd [167.3 m]/1.7 oz [50 g]): #100 white house, 7 balls.

HOOK

E/4 [3.5mm] or size needed to obtain gauge.

NOTIONS

Split-ring stitch marker; tapestry needle.

GAUGE

First 4 rnds = 4" [10 cm] in diameter.
18 sts x 8 rows = 4" [10 cm] in dc border edging.

FINISHED SIZE

54" [137 cm] in diameter.

times, omitting last sc, join with sl st in first sc at beg of rnd—30 ch-7 sps.

RND 12: Rep Rnd 6—30 petals.

RND 13: Ch 1, sc in first sc, *ch 7, skip next 4 dc, sc in next dc, [ch 7, skip next 9 sts, sc in next dc] 4 times, ch 7, skip next 4 dc, sc in next sc, rep from * 5 times, omitting last sc, join with sl st in first sc at beg of rnd—36 ch-7 sps.

RND 14: Rep Rnd 6—36 petals.

Refer to stitch diagram B, on p. 28, for assistance with the next two rows.

RND 15: Ch 1, sc in first sc, *[ch 5, work clones knot] 4 times, ch 5, skip next 2 sts, sc in the next st, rep from * around—108 giant loops. Fasten off.

RND 16: With RS facing, join yarn with sl st to center of any giant lp from Rnd 15, ch 1, sc in same sp, *[ch 5, work clones knot] 4 times, ch 5, sc in center of next giant loop—108 giant loops. Fasten off.

RNDS 17–19: Rep Rnd 16. Fasten off.

Edging

Note: Edging is worked around perimeter of shawl. At the end of every 4th row, edging is joined to the next adjacent giant lp from Rnd 19.

Refer to stitch diagram C on p. 28 for assistance.

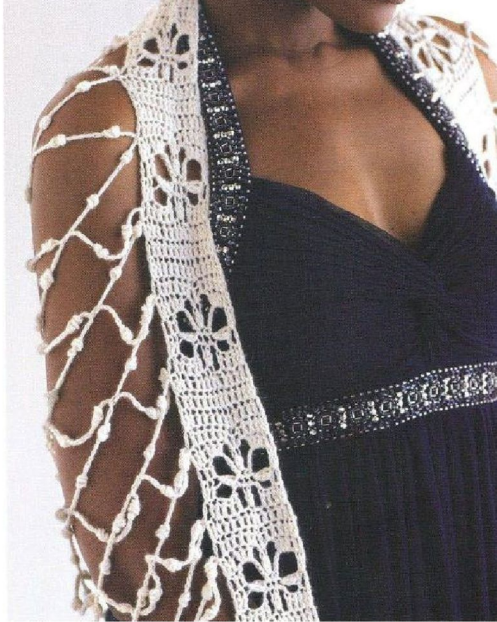
ROW 1: Work 14 fdc.

ROWS 2–4: Ch 3 (counts as dc now and throughout), dc in each dc across, turn. At the end of Row 4, sl st to center of next giant lp from Rnd 19.

ROW 5: Ch 3, dc in each of next 5 dc, ch 3, skip next dc, 3-dc cl in next st, ch 3, skip next dc, dc in each of next 5 sts, turn.

ROW 6: Ch 3, dc in next dc, ch 3, 2-dc cl around the post of last dc worked, sc in next ch-3 sp, sc in next 3-dc cl, sc in next ch-3 sp, ch 3, 2-dc cl around post of last sc worked, skip next 3 dc, dc in each of last 3 sts, turn.

ROW 7: Ch 3, dc in each of next 2 dc, ch 7, sc in each of next 3 sc, ch 7, dc in each of last 2 dc, turn.

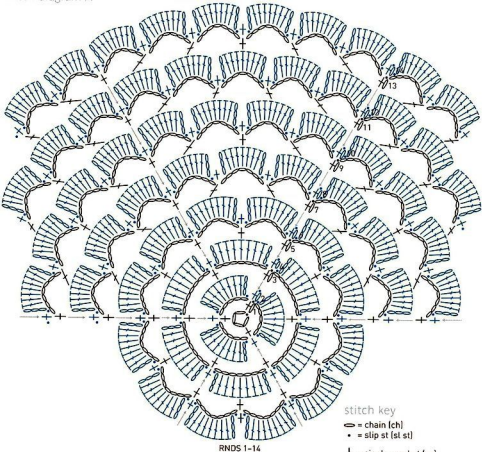


ROW 8: Ch 3, dc in next dc, 3 dc cl in next ch-7 sp, ch 3, skip next sc, 3-dc in next sc, skip next sc, ch 3, 3 dc in next ch-7 sp, dc in each of last 3 sts, sl st in center of next giant lp from Rnd 19.

ROW 9: Ch 3, dc in each of next 5 dc, dc in next ch-3 sp, dc in next 3-dc cl, dc in next ch-3 sp, dc in each of last 5 dc, turn.

Rep Rows 2–9 until Edging is joined to every giant lp around. Whipstitch last row of Edging to first row of Edging to create a circular border.

Wet or steam block to finished measurements. Weave in loose ends with a tapestry needle.



stitch key

— = chain (ch)

• = slip st (sl st)

† = single crochet (sc)

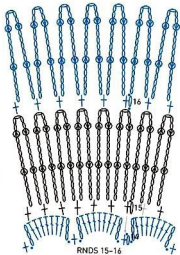
⌈ = double crochet (dc)

⌈⌈ = 2-dc cluster

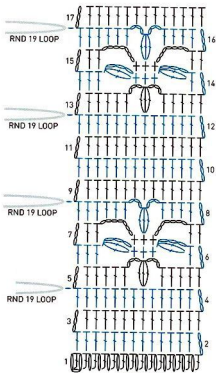
⌈⌈⌈ = 3-dc cluster

Ⓢ = clones knot

stitch diagram B



stitch diagram C



1

2

3

4

